

January 19, 2013

To; Robert Eban, Superintendent,

Southern California Agency, Bureau of Indian Affairs

1415 Research Park Drive

Riverside CA 92507

EIS Comments, Shu'luuk Wind Project, San Diego County CA

My name is Samuel Milham. I am a semi-retired physician epidemiologist with 30 years experience in studying the health effects of electromagnetic fields. I'd like to make you aware of the serious health problems caused by wind turbines and commercial photo voltaic solar arrays. I have recently studied the electrical pollution caused by wind turbines in the Palm Springs CA and Boulevard CA areas. Wave forms and harmonics from Palm Springs are shown in a paper by my colleagues Magda Havas and David Collings (att) on page 7. I have also studied residential and commercial solar installations near Indio CA.

Here are some spectra captured on the Manzanita Reservation near Boulevard CA. The spectra prove that the Campo wind farm and the utility is the source of this electrical pollution since the sine waves are at 60 Hz. The spectra should only have a bar at 60 Hz. The other bars are harmonics which shouldn't be there. At the Tribal Headquarters the ground voltage is 7.3 volts (3.6 +3.7) in the red data block.

The turbines also generate infrasound which has been shown to cause health problems as far as 3/4 of mile from the blades.

The problem with the electrical pollution comes from the inverters and controllers which change the generated electricity to grid frequencies.

The harmonics and transients generated by the inverters are called dirty electricity by the utilities. Dirty electricity is a potent carcinogen and causes most of the diseases of civilization. See my book *Dirty Electricity* and visit my website for more information, for my CV and for contact information: www.sammilham.com.

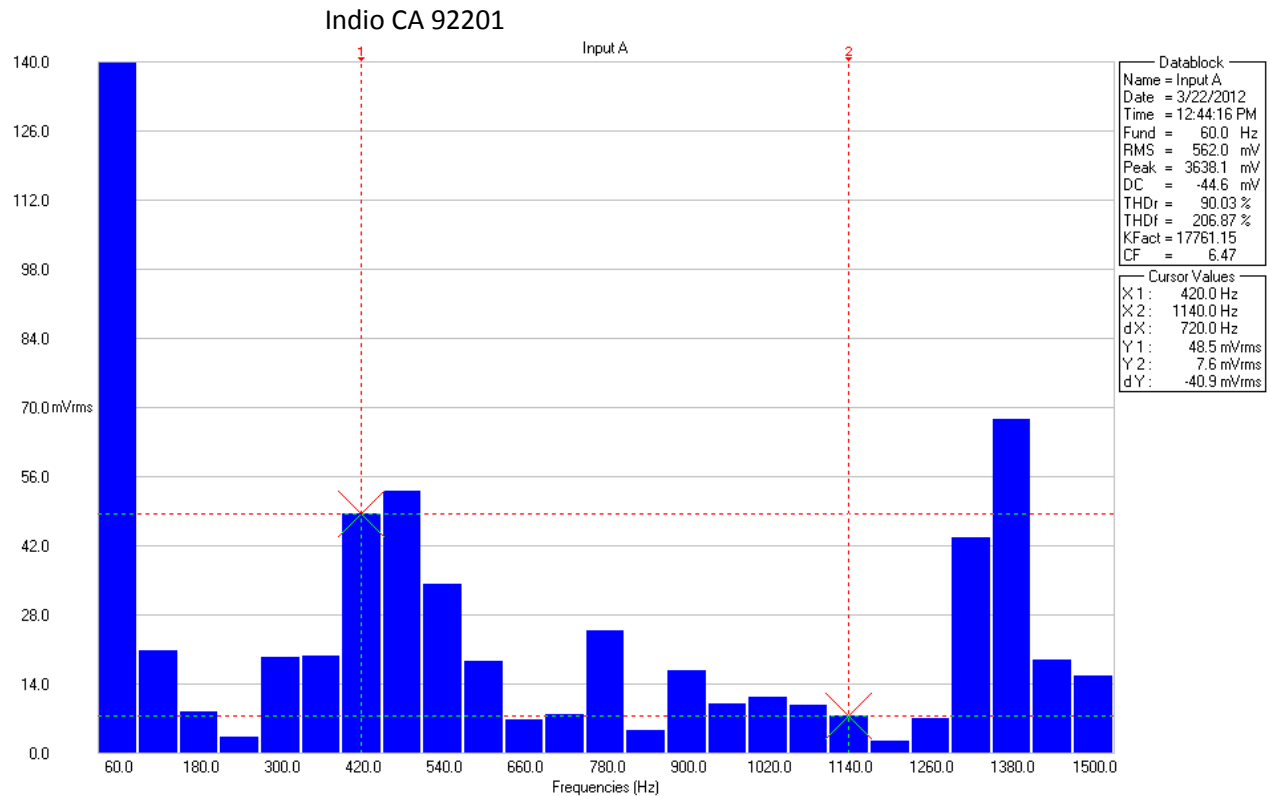
I have recently also examined the Sun Peak solar 23 megawatt generating plant in Niland CA, and the Administration building at Calipatria State Prison , since the prison is a major user of the Niland plant's electricity. Electrical measurements in the inverter rooms, the switchgear rooms, at the solar substation and in the wardens office at the prison, show that all these places are contaminated by dirty electricity of solar inverter origin. see below

My recommendation is that wind turbines and solar generating plants should not be sited within at least 3/4 of a miles of homes, and that it would be prudent to delay wind farm construction including the Shu'luuk Wind Project, San Diego County CA, and large commercial photovoltaic solar generating projects until the utilities and the manufacturers can solve their serious electrical pollution

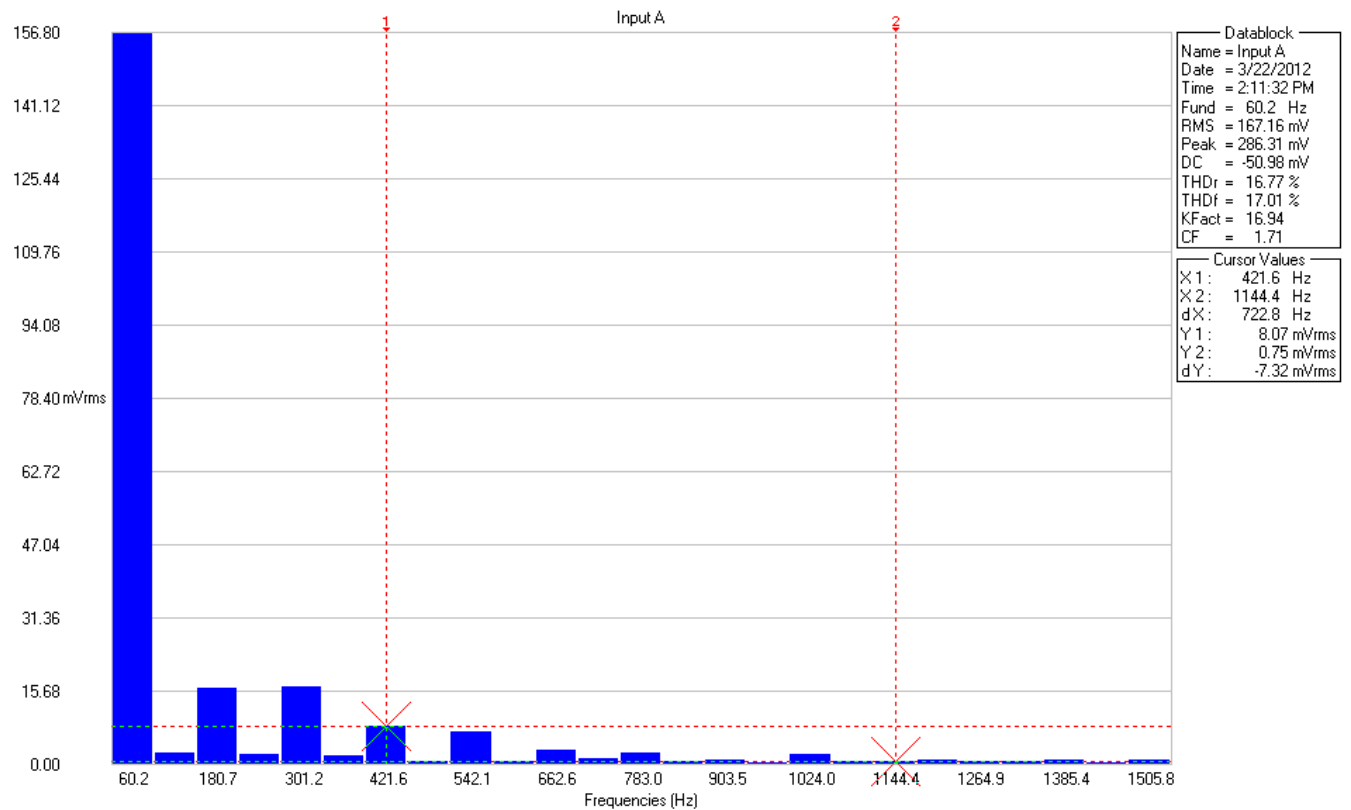
problems. Southern California Edison and other utilities now dump nearly 80 percent of their delivered electricity into the earth for return to the substations. In my opinion this is causing serious health problems for area residents. Residents of cities receiving this dirty wind and solar generated electricity will also be at risk for adverse health outcomes.

Respectfully submitted, Samuel Milham MD, MPH 760 775-5878

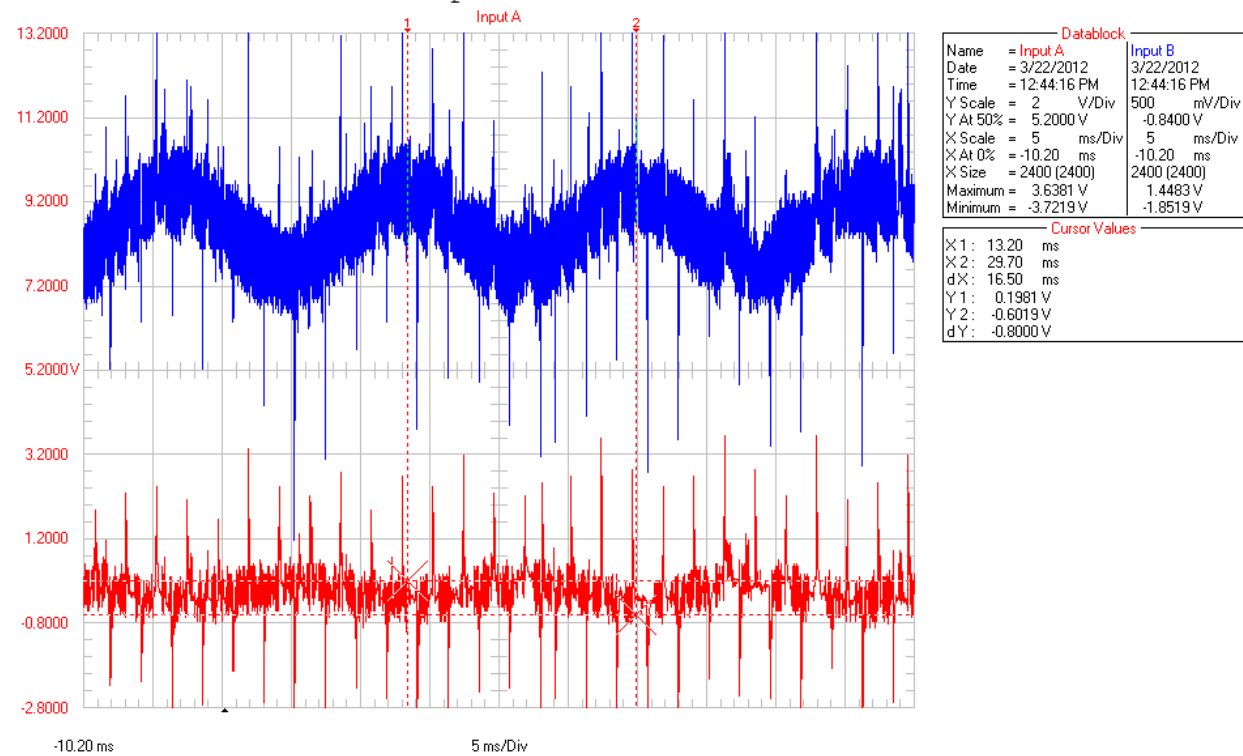
82181 Bergman Dr.



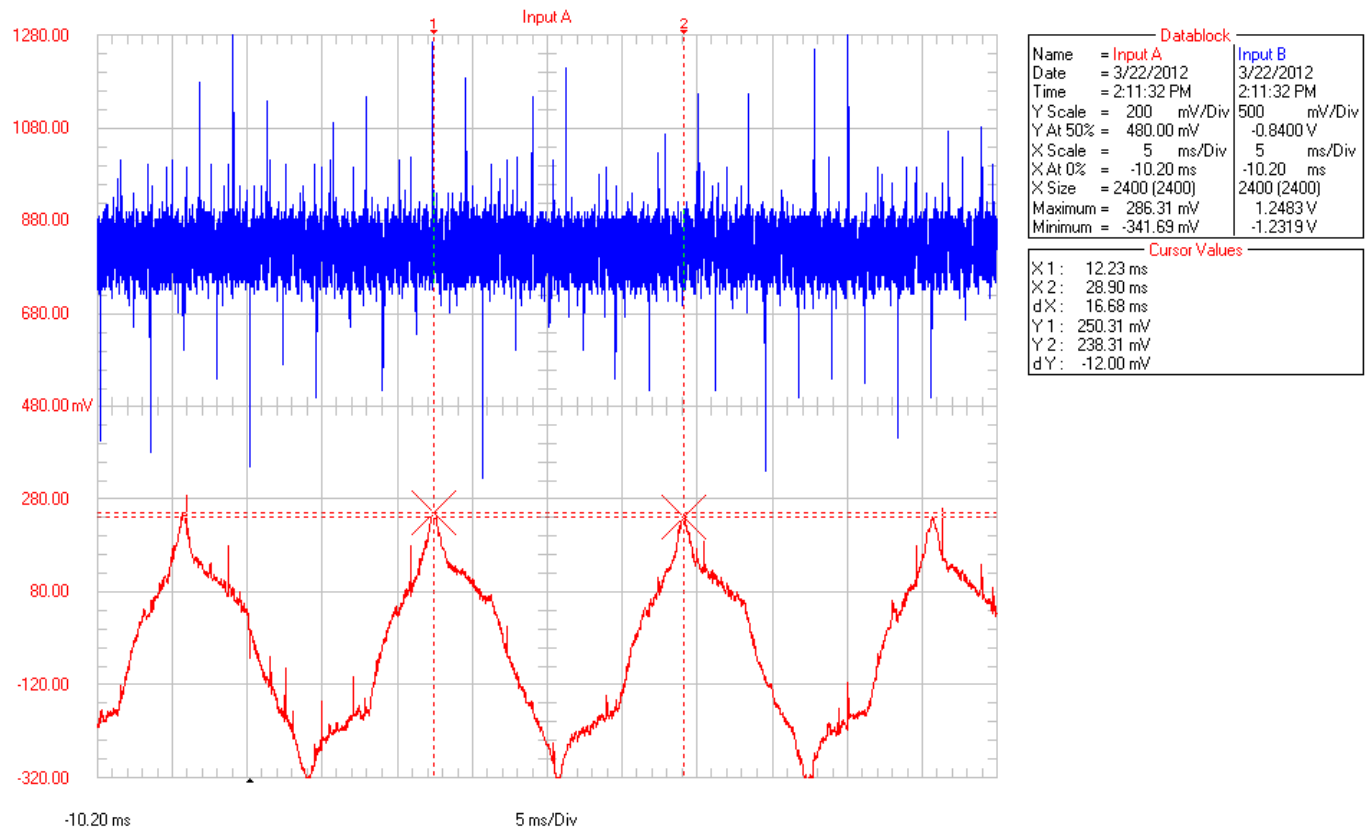
spectrum at Manzanita Tribal HQ



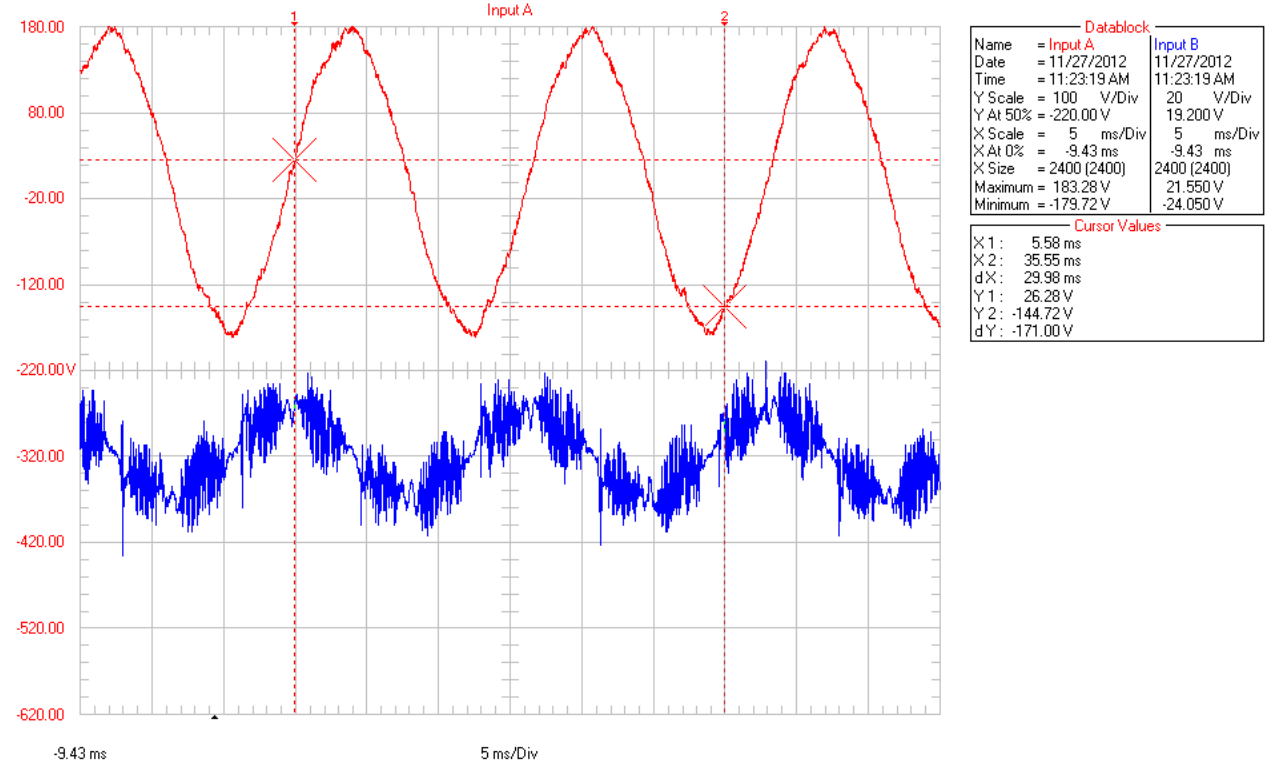
Manzanita tribe church spectrum



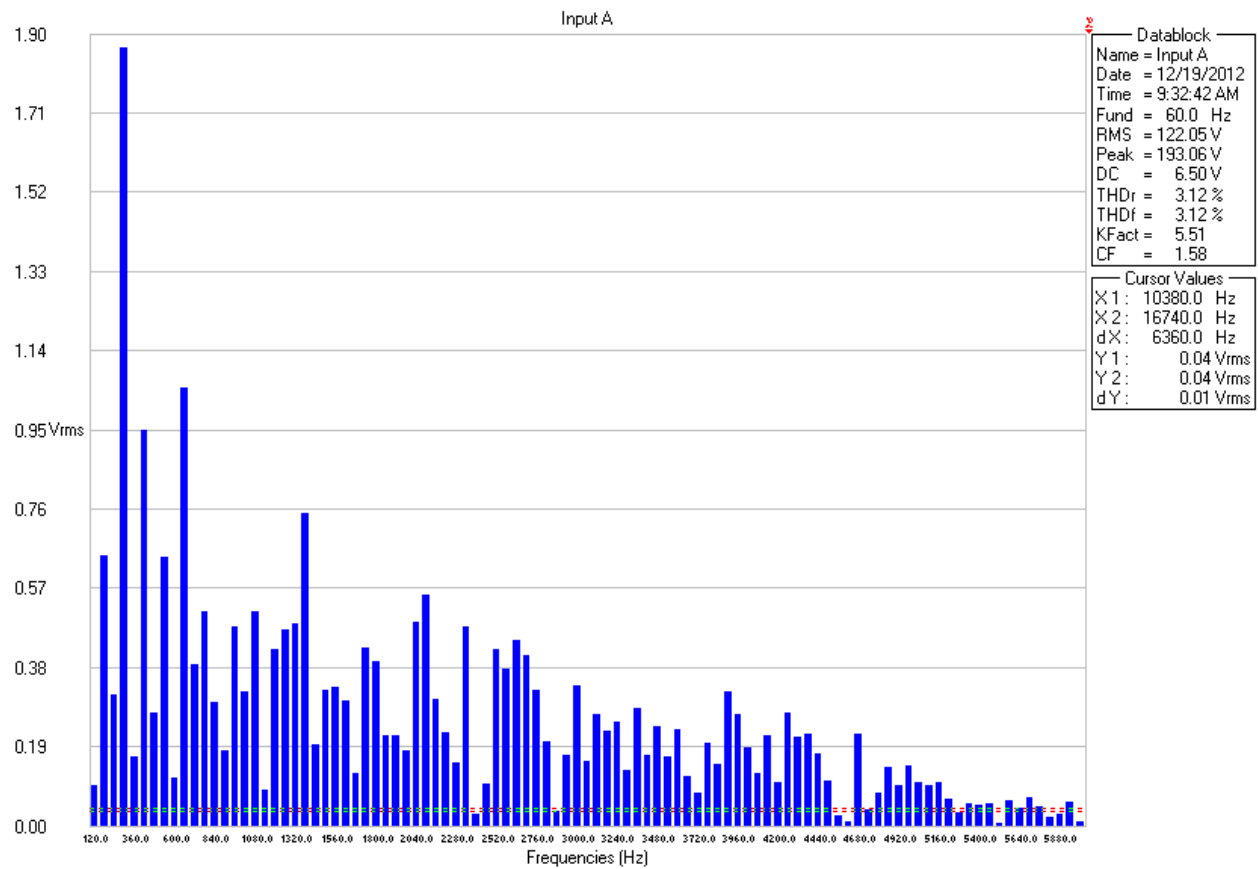
Manzanita Tribe HQ N 32 44.131, W 116 20. 700. Blue = antenna in air, red = ground voltage (40 feet of wire)



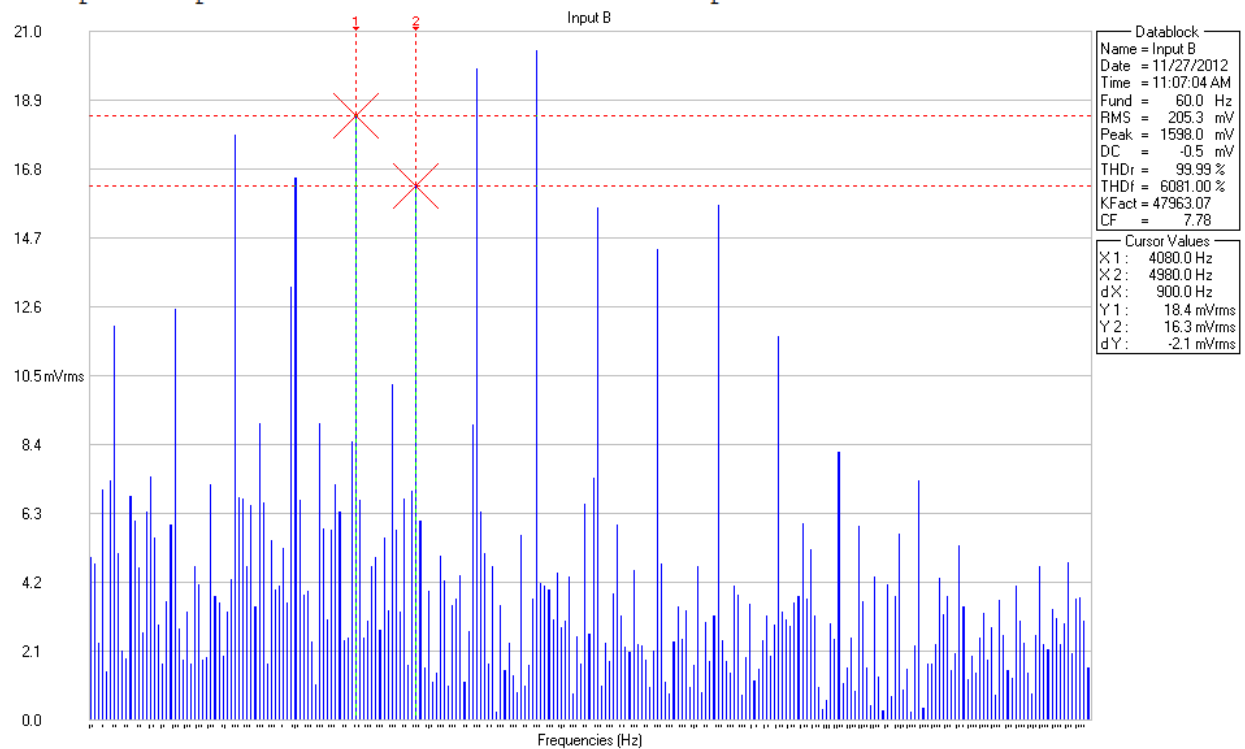
Manzanita church 32 45 693 W 116 19 731 red = ground blue = air



Switchgear room outlet 23 Mw 440 E beal St Niland CA



calipatria prison warden's office outlet spectrum



Solar inverter in air Niland solar array