



## Update: Election Process for GUHSD School Board GUHSD Trustee Election Areas Being Drawn



Members of the Board of Trustees of the Grossmont Union High School District are currently elected in “at-large” elections in which “each member of the Governing Board is elected by the registered voters of the entire district . . . ,” At-large electoral systems are subject to challenge under the California Voting Rights Act of 2001 (CVRA).

On November 18, 2015, the District received a letter contending that the District’s at-large electoral system violates the CVRA, threatening litigation if the District declined to adopt by-trustee area elections for use in November 2016 and thereafter. Though the letter was not accompanied by any evidence to support the claim of a violation, and though the District disputes the idea that its electoral system violates the Act, the Board of Trustees nevertheless concluded that the public interest would be better served by avoiding the expense of unnecessary litigation.

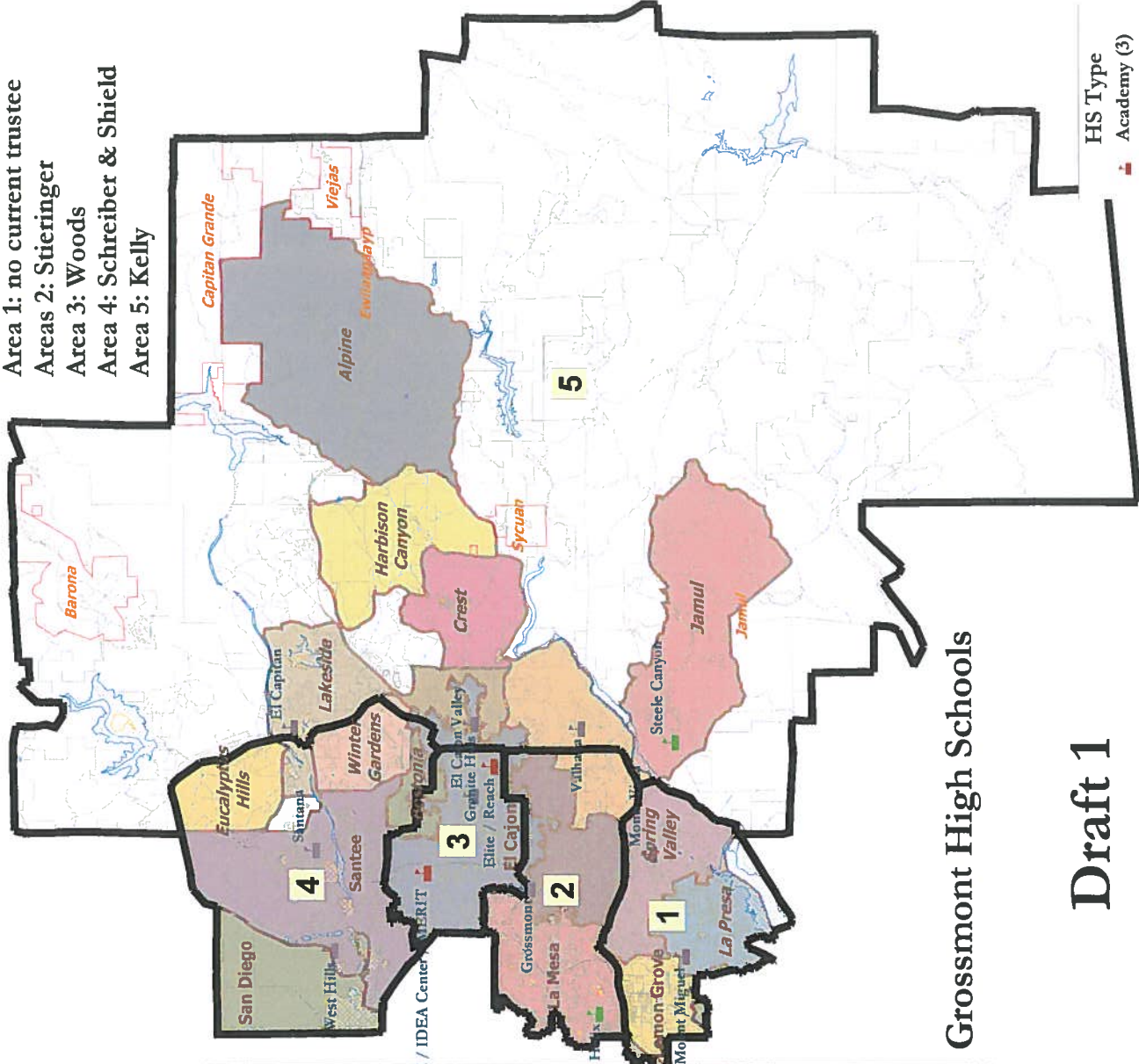
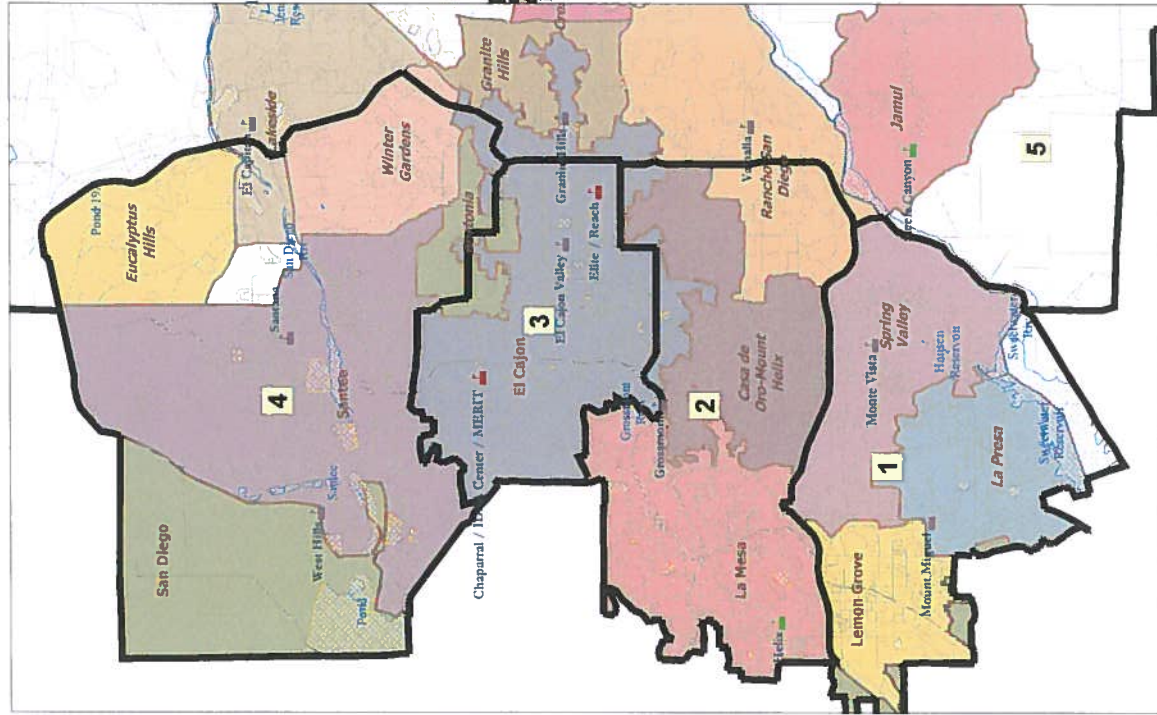
- At its regular meeting on December 10, 2015, the Board unanimously adopted a motion to initiate the process of moving to trustee areas, instructing the Superintendent to submit a resolution to the Board to formalize that process, and authorizing the Superintendent to retain an experienced demographer to assist the District in developing trustee areas.
- At its regular meeting on January 14, 2016, the Board heard presentations from its independent special counsel and demographic consultant regarding CVRA and the districting process, and then adopted resolutions to initiate the process of adopting trustee area elections; and adopting a series of criteria to guide the drawing of the trustee area plan.
- On January 22, 2016, the District made public on its website the demographic consultant’s three possible trustee area maps, as well as all information relative to this topic; information was added as presentations were made and Board action was taken.
- On January 26, February 11, and February 25, the Board conducted duly-noticed public hearings on the three draft trustee area plans and on February 25 also held a hearing regarding their intention to seek a waiver from the California Department of Education of the formal requirement that the change of a school district’s electoral system be submitted to the voters for approval before it may be implemented. The election requirement, if not waived, will prevent GUHSD from implementing its new trustee areas for November 2016, thereby subjecting the District to the very litigation it seeks to avoid. For this reason, the State Board has granted hundreds of waivers of this requirement over the past few years.
- On February 25, the Board of Trustees adopted Map Option #1 and also voted to seek a waiver from the California Department of Education as outlined above.
- The San Diego County Committee on School District Organization will now consider the GUHSD plan, including Map Option #1, after conducting Public Hearings in four locations throughout the GUHSD. Remaining hearings will be held at 6:00 p.m. on March 28 (ECREC - GUHSD Board Room); April 4 (Joan MacQueen Middle/Alpine); April 5 (Jamul Int. School Library) & April 11 (Lakeside USD Office).

Additional information regarding this process, including the Governing Board’s proposed Trustee Map and accompanying demographics, is available on the GUHSD website at:

<https://goo.gl/WVfKrX>

# Grossmont Union High School District 2016 Districting

Trustee Locations:  
 Area 1: no current trustee  
 Area 2: Stieringer  
 Area 3: Woods  
 Area 4: Schreiber & Shield  
 Area 5: Kelly



Grossmont High Schools

Draft 1

## Grossmont Union High School District - NDC Draft 1

District		1	2	3	4	5	Total
	Total Pop	91,369	91,334	88,676	91,740	89,986	453,105
	Deviation from ideal	748	713	-1,945	1,119	-635	3,064
	% Deviation	0.83%	0.79%	-2.15%	1.23%	-0.70%	3.38%
Total Pop	% Hisp	40%	19%	31%	17%	17%	25%
	% NH White	34%	65%	53%	74%	74%	60%
	% NH Black	14%	7%	8%	3%	2%	7%
	% Asian-American	8%	6%	6%	4%	3%	6%
Voting Age Pop	% Hisp	35%	17%	27%	15%	15%	21%
	% NH White	40%	69%	58%	77%	78%	65%
	% NH Black	13%	6%	7%	2%	2%	6%
	% Asian-American	9%	6%	6%	4%	3%	6%
Citizen Voting Age Pop	Total CVAP	60,186	69,236	50,314	66,860	65,621	312,217
	% Hisp	32%	17%	23%	13%	14%	20%
	% NH White	44%	67%	60%	78%	78%	66%
	% NH Black	12%	7%	8%	2%	2%	6%
	% Asian-American	8%	4%	4%	3%	2%	4%
Voter Turnout (Nov 2012)	Total Turnout	30,770	41,185	22,238	39,995	41,409	175,598
	% Latino	25%	11%	16%	10%	9%	14%
	% Asian-Surnamed	2%	2%	1%	1%	1%	1%
	% Filipino-Surnamed	2%	1%	1%	1%	1%	1%
Voter Registration (Nov 2014)	Total Reg.	44,199	52,436	32,608	52,194	53,001	234,438
	% Latino	30%	13%	20%	12%	11%	17%
	% Asian-Surnamed	2%	2%	2%	1%	1%	2%
	% Filipino-Surnamed	2%	1%	1%	1%	1%	1%
Voter Turnout (Nov 2014)	Total Turnout	15,992	25,177	11,351	23,263	25,615	101,398
	% Latino	20%	9%	13%	8%	8%	11%
	% Asian-Surnamed	2%	2%	1%	1%	1%	1%
	% Filipino-Surnamed	2%	1%	1%	1%	1%	1%
Age	age0-19	30%	23%	30%	27%	25%	27%
	age20-60	54%	55%	56%	55%	55%	55%
	age60plus	16%	22%	14%	17%	20%	18%
Immigration	immigrants	22%	15%	29%	9%	13%	18%
Housing Stats	rented	41%	47%	65%	33%	26%	42%
	owned	59%	53%	35%	67%	74%	58%
	singlefamily	75%	60%	48%	74%	84%	68%
	multifamily	25%	40%	52%	26%	16%	32%
Language spoken at home	english	57%	77%	57%	83%	78%	71%
	spanish	32%	12%	24%	10%	14%	18%
	asian-lang	7%	3%	4%	3%	2%	4%
	other lang	3%	8%	16%	4%	6%	8%
Children at Home	child-under18	50%	42%	53%	46%	41%	46%
Household Income	hhincome0-25k	19%	20%	31%	14%	14%	19%
	hhincome25-50k	24%	23%	27%	21%	20%	23%
	hhincome50-75k	20%	16%	19%	21%	16%	18%
	hhincome75-200k	34%	35%	22%	40%	42%	35%
	hhincome200k-plus	3%	5%	2%	4%	7%	4%
Education (among those age 25+)	hs-grad	64%	56%	61%	69%	64%	63%
	bachelor	13%	22%	11%	14%	16%	16%
	graduatedegree	5%	13%	5%	7%	9%	8%

Total and Voting Age population data from the 2010 Decennial Census.

Voter Registration and Turnout data from the California Statewide Database.

Citizen Voting Age Pop., Age, Immigration, and other demographics from the 2009-2013 American Community Survey 5-year data.