

EL MONTE SAND MINING PROJECT
PDS2015-MUP-98-014W2; PDS2015-RP-15-001
ENVIRONMENTAL LOG NO. PDS2015-ER-98-14-016B.
DRAFT SUBSEQUENT ENVIRONMENTAL IMPACT REPORT
PUBLIC REVIEW PERIOD
August 30, 2018 through October 29, 2018

FACT SHEET

- **County Permit Applications:** Major Use Permit (MUP) and Reclamation Plan
- **Area of Ownership and MUP area:** Approximately 479.5 acres
- **Area of Mining Footprint:** 228 acres (including depression area, trails, drop structure)
- **Disturbance Outside Mining Footprint:** 34 acres for trail staging areas, trails, and fuel modification
- **Total Disturbance Area:** 262 acres
- **Location:** Between El Monte Road and Willow Road, approximately 2,500 feet east of Lake Jennings Park Road, 6,300 feet west of El Monte County Park, and 3 miles west of El Capitan Dam
- **Mining Site Access:** From El Monte Road, site ingress point – 2,500 feet east of Lake Jennings Park Rd.; Site egress point – 2,300 feet east of ingress point
- **Zoning:** S82 Extractive Use and A70 Limited Agriculture, both of which permit mining activities upon approval of a Major Use Permit and Reclamation Plan
- **Project Duration:** The overall project would be completed in 16 years, this includes 12 years for mining processes and 4 additional years to complete restoration and revegetation
- **Volume/Depth:** 12.5 million tons of construction aggregate (sand and gravel) with a pit depth of 36 to 41 feet below ground surface; excavation will stay above current groundwater table elevation
- **Days/hours of mining operation:** Monday-Friday, 7:00 am – 5:00 pm; Saturday, 7:00 am – 1:00 pm (transport only); Closed Sundays and holidays. Approximately 306 work days/year
- **Truck trips:** Approximately 157 one-way truck trips daily (314 total daily truck trips)
- **Water Supply:** No use of groundwater. Water proposed to be supplied by Lakeside Water District
- **Mining/Reclamation Progression:** Mining and reclamation will progress from east to west in 4 phases.
- **Processing Plants:** One mobile (portable) plant for screening material, and one stationary plant (southwest corner of site) for washing, sorting, loading, and weighing of material
- **Significant and Unavoidable Impacts:**
 - Aesthetics/Visual Resources: Impacts to Scenic Vistas, Scenic Resources, Visual Character/Quality, and Aesthetics-related Goals/Policies;
 - Land Use: Non-conformance with Scenic 'S' Designator;
 - Mineral Resources: Loss of known mineral resource of value to region
- **Less Than Significant Mitigated Impacts:**
 - Air Quality: Mitigation measures include dust control measures, engine standards for equipment, and idling restrictions;
 - Biological Resources: Mitigation measures include biological monitoring, habitat restoration, species relocation, revegetation and reclamation oversight, preservation of mature riparian woodland, and establishing open space easements;
 - Cultural Resources: Mitigation measures include establishing open space easement, temporary protective fencing, and monitoring;
 - Paleontological Resources: Mitigation measure includes monitoring;
 - Hazards: Mitigation measures include compliance with Vector Management Plan, Fire Protection Plan, and Site Safety Plan;

Noise: Mitigation measures include limits to hours of operation, equipment maintenance, placement of stationary equipment, compliance with noise level limitations, and minimum distances of various activities from the project boundaries;

Traffic: Mitigation measures include improvement requirements for several intersections, and payment of Traffic Impact Fees;

- **Reclamation/Revegetation**: Reclamation pursuant to the *Surface Mining and Reclamation Act* (SMARA) to regrade slopes, contours, and 25-foot wide low flow channel; revegetation to native riparian and upland habitats subject to performance standards, success criteria, and financial security (bonding)
- **Project Alternatives**:
 - No Project Alternative (provides mitigation for previous golf course grading);
 - Reduced Areal Extent Alternative (increased buffer from surrounding residences in some locations, extraction of 10.3 million tons of material);
 - Altered Areal Extent Alternative (increased buffer from surrounding residences in some locations, additional extraction area east of Dairy Road, 12.5 million tons of material)
- **Trails/Staging Areas**: Western staging area and perimeter trail to be provided with Phase 1, internal trails and southwest staging area to be provided with Phase 4
- **Valley Fever**: Valley Fever is discussed in Section S.3 and Appendix Q of the Draft SEIR. Disturbance to surface soils could increase exposure to *Coccidioides* spores; however, measures have been identified to reduce possible exposure (Section 5 of Appendix Q)

HOW TO SUBMIT COMMENTS ON EL MONTE SAND MINE DRAFT ENVIRONMENTAL IMPACT REPORT (DEIR)

The draft Subsequent Environmental Impact Report for the El Monte Sand Mine project is available for public review from August 30, 2018 – October 29, 2018 (60-day public review).

Written comments may be submitted by Mail, Fax or Email

Comments must be received no later than October 29, 2018 at 4:00 p.m.

Mail:

Heather Steven, Project Manager
County of San Diego
Planning and Development Services
5510 Overland Ave., Suite 310
San Diego, CA 92123

Email: heather.steven@sdcounty.ca.gov or
robert.hingtgen@sdcounty.ca.gov

FAX: (858) 694-2555

This draft can be reviewed on the World Wide Web at http://www.sdcounty.ca.gov/pds/ceqa_public_review.html

Copies are also available for review:

Planning & Development Services
(PDS)
Project Processing Counter
5510 Overland Ave., Suite 110
San Diego, California 92123

Lakeside Branch Library
9839 Vine Street
Lakeside, CA 92040

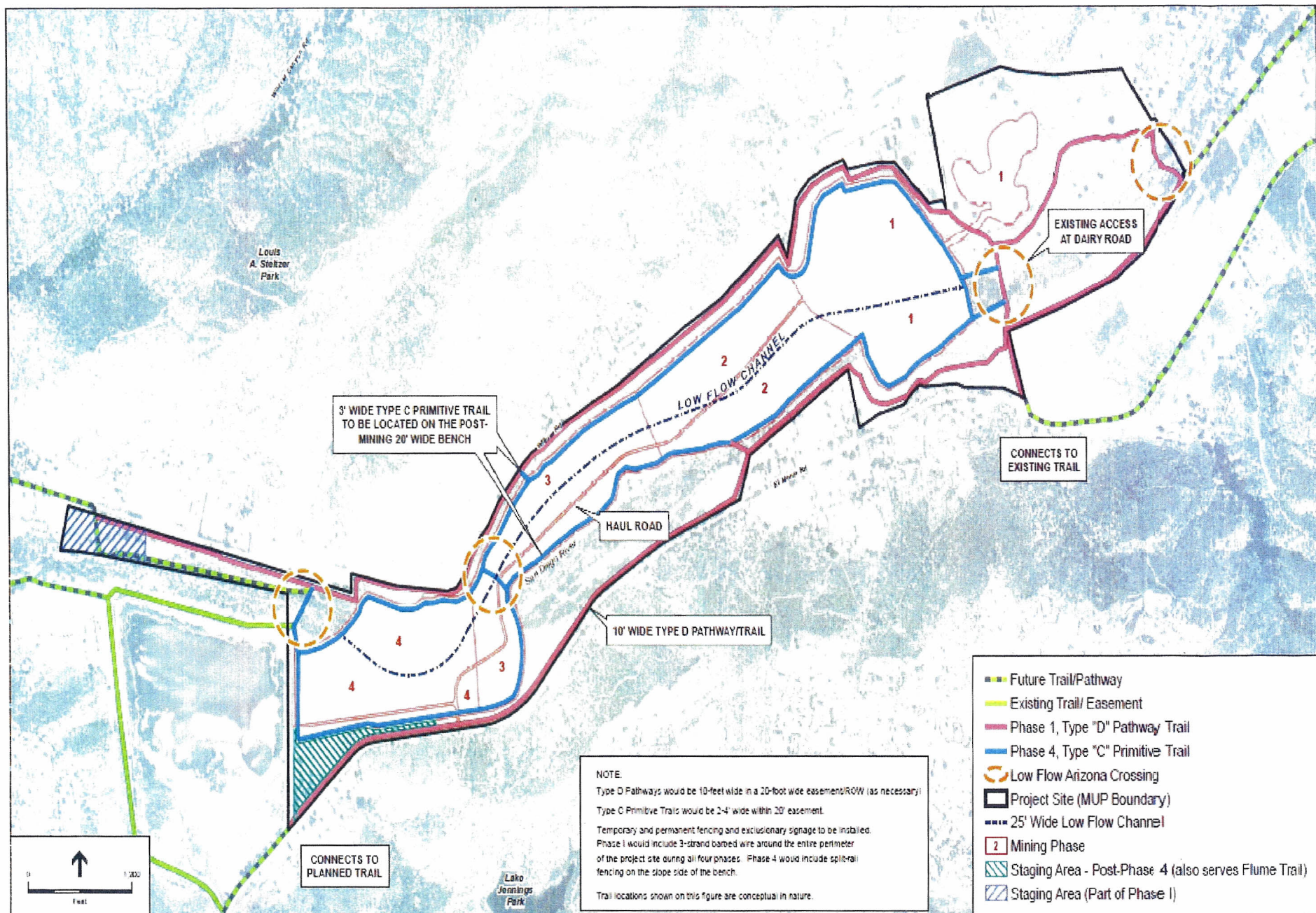
Santee Branch Library
9225 Carlton Hills Blvd., #17
Santee, CA 92071

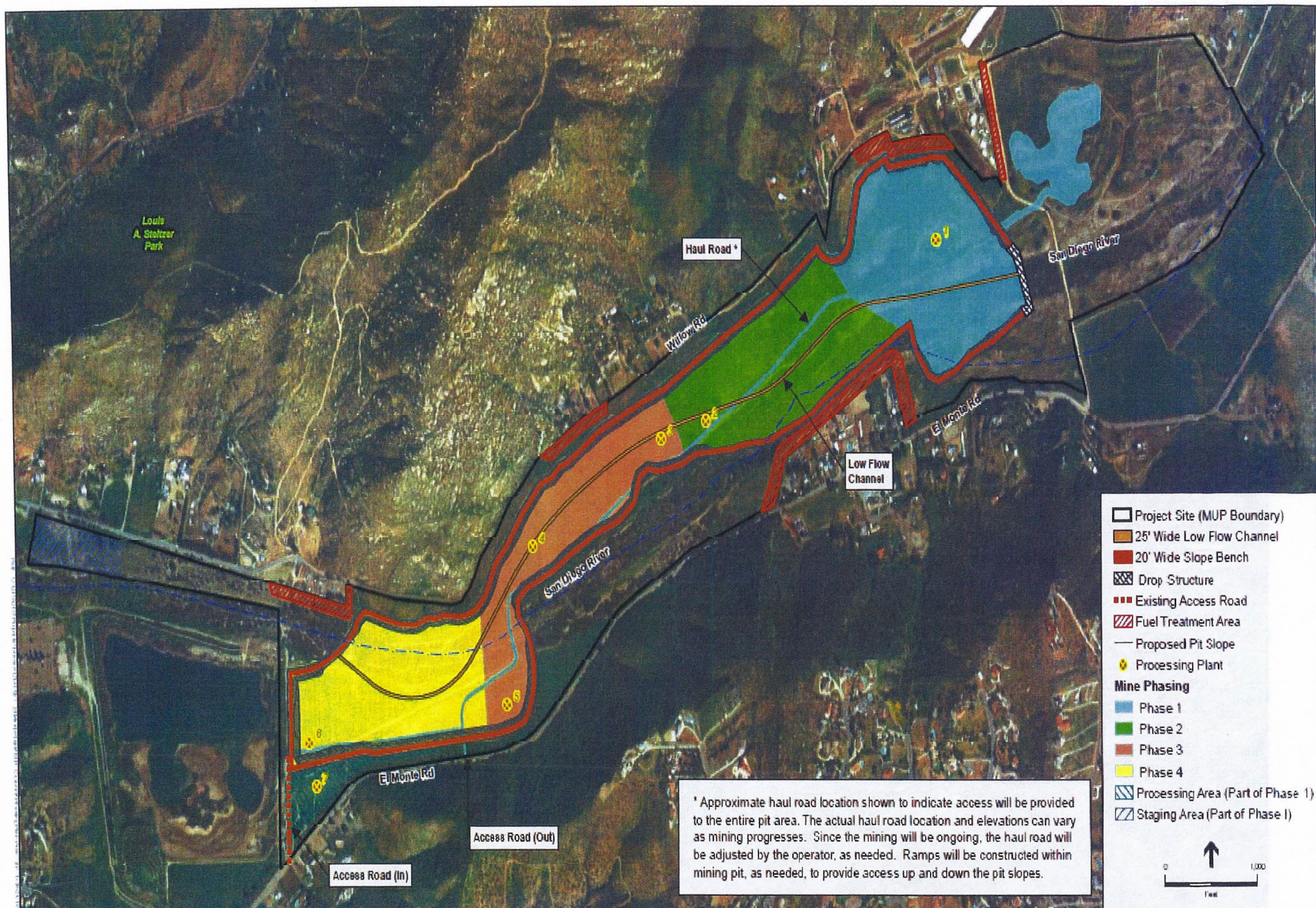


SOURCE: ESRI

El Monte Sand Mining Project, 140957

Figure 1-2
Project Vicinity





* Approximate haul road location shown to indicate access will be provided to the entire pit area. The actual haul road location and elevations can vary as mining progresses. Since the mining will be ongoing, the haul road will be adjusted by the operator, as needed. Ramps will be constructed within mining pit, as needed, to provide access up and down the pit slopes.